

X6⁵



X-Yachts, founded in 1979, is reputed for making yachts that are synonymous with superior quality, skilled craftsmanship and innovative design, giving their owners and crew an exceptional sailing experience. Made using build technologies that result in a supreme sailing performance, each models results from a design based on an “in-depth” understanding of the elements that make a yacht sail well.

The logo consists of the characters 'X65' in a bold, italicized, sans-serif font. The 'X' is the largest and most prominent, followed by the '6' and then the '5' which is smaller and positioned as a superscript.

NEW STATE-OF-THE-ART





The X6⁵ is the first model in a new range, aimed at the discerning sailor and his crew. It utilises advanced, proven technology and build techniques which only incorporate first class components, enabling the exploration of new uncharted horizons in comfort.

The X6⁵ comes with a comprehensive range of options to help tailor each individual's sailing experience. This brochure will guide you through most of the standard and optional features.

X-Yachts' background being the builder of the most winning production yachts for more than three decades, is mirrored in the X6⁵'s technical specification.

Vacuum infused epoxy / sandwich hull (see explanation on Page 8), galvanized keel hull girder pioneered by X Yachts since 1981, epoxy encapsulated low gravity lead keel faired to original keel sections, discontinued rod rigging with hydraulic backstay adjuster, flush recessed and faired hull skin fittings and standard folding propeller all guarantee 'Superb Sailing Pleasure'.

The X6⁵ offers an easily handled package, ideal for double handed sailing.

Image to left displays optional carbon-fibre reinforced mainsail arch allowing for the integration of cockpit bimini, speakers and downlights. The arch also improves the cockpit safety by taking the mainsheet away from the cockpit.



“ Architecture should speak of time and place, but yearn for timelessness ”

- FRANK GEHRY



DESIGNER'S COMMENTS

THE STORY BEHIND THE DESIGN & CONSTRUCTION

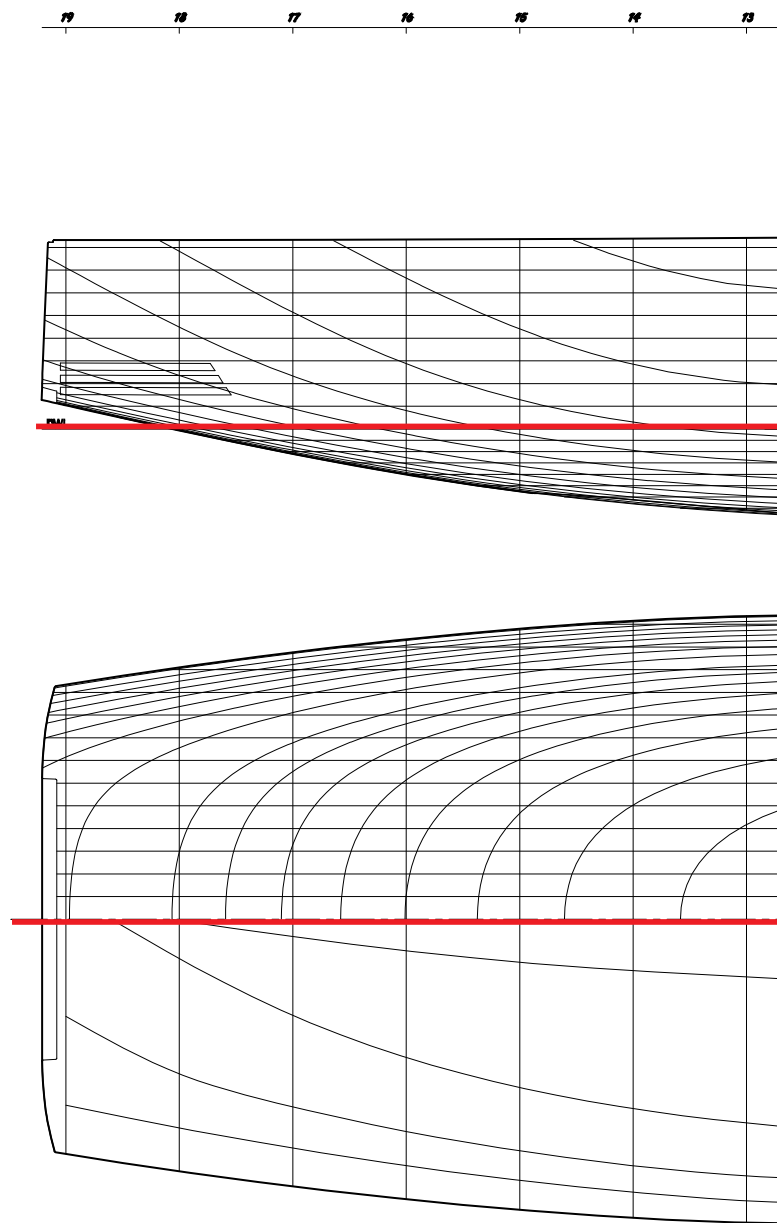
The X6⁵'s hull is designed to meet the demands from sailors, who want to enjoy sailing in a wide range of conditions. In contrast to the mainstream trends of yachts with a very modern appearance, the X6⁵ is meant to be enjoyable and easily controllable in more than just 'reaching' conditions. The upwind performance and sea keeping has been given a lot of attention whilst choosing design parameters and various aspect ratios.

Achieving comfort when sailing to windward in a rough sea was an essential prerequisite in the X6⁵ hull design. Deep V sections, modest displacement, generous stability, and a powerful yet easy to handle sail plan offers smooth sailing through the waves. This combined with the thoroughbred X-Yachts racing heritage delivers a new generation of world class cruising.

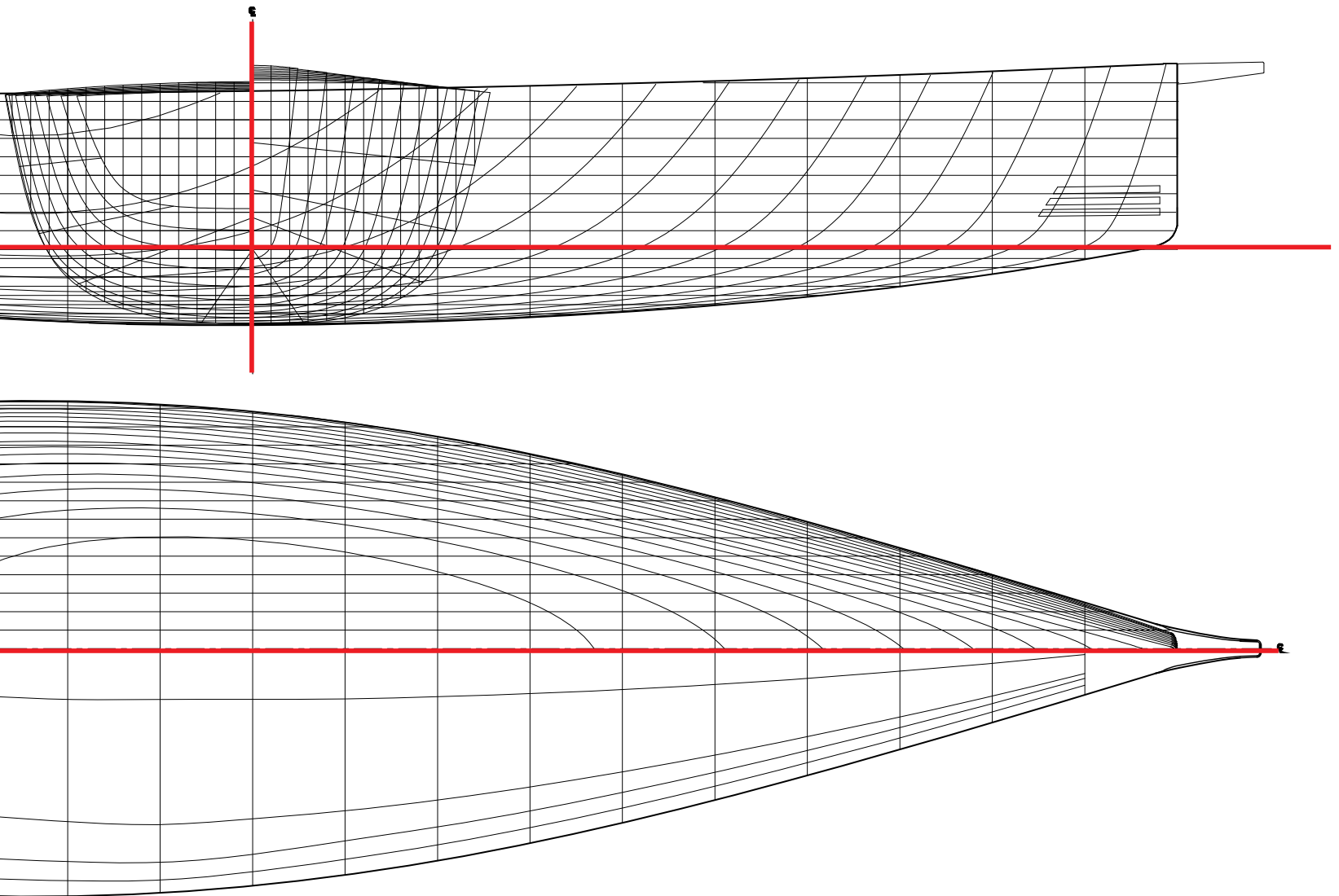
The X6⁵ construction combines advanced materials in a sensitive way by using vacuum epoxy infused fibres in a sandwich construction. Local carbon fibre reinforcements give the hull the rigidity required to put the rig in tension with very little deformation.

Using a combination of Eglass and carbon skins instead of a full carbon construction delivers high overall strength and stiffness whilst producing a healthy resistance to local impact.

Comfortable stability has been achieved with a high ballast ratio instead of an extreme hull shape. Wetted surface area and friction drag is minimised, which is essential for light wind performance..



12 11 10 9 8 7 6 5 4 3 2 1 0





CLUTTER FREE DECK

The X6⁵ rewards the owner with a deck and rigging layout fit for a king.

Halyards and control lines are led back to the aft cockpit coamings, making for a clutter free environment. It is decked out with vacuum applied laid teak on sidedecks, all seating, cockpit sole and the inside of the transom door / swim platform.

All pedestals have side boxes which hold the standard electronic throttle and any thruster controls as well

as controls for the furlers. Adjustable recessed foot chocks also add comfort whilst under sail.

X6⁵ comes with a variety of optional extras (shown in image to right) on deck including:

- Teak on coachroof top / coamings
- Bow sprit in carbon
- Main sheet arch (GRP or carbon)
- V-shaped furling boom (GRP or carbon), built by FurlerBoom



DECK SETUP



CLEAR DECKS

Halyards and control lines that are led aft to the cockpit are concealed below deck and reappear at the Harken winches to create a sleek clutter-free deck space.



WHEEL PEDESTALS

White GRP wheel pedestals & boxes come as standard with black composite wheels and 128mm Silva compass. Options also available for clear coated carbon pedestals

and instrument boxes to create a modern finish. All furling systems and engine controls are controlled from the push buttons on the console for easy short handed sailing.



LIFERAFT STOWAGE

The 8 man liferaft stows neatly under the cockpit floor so is easily accessible in case of emergencies.



TENDER GARAGE

The aft tender garage houses a Williams Jet RIB. The innovative system allows for one person to easily and safely launch & recover the RIB with a simple push button system.

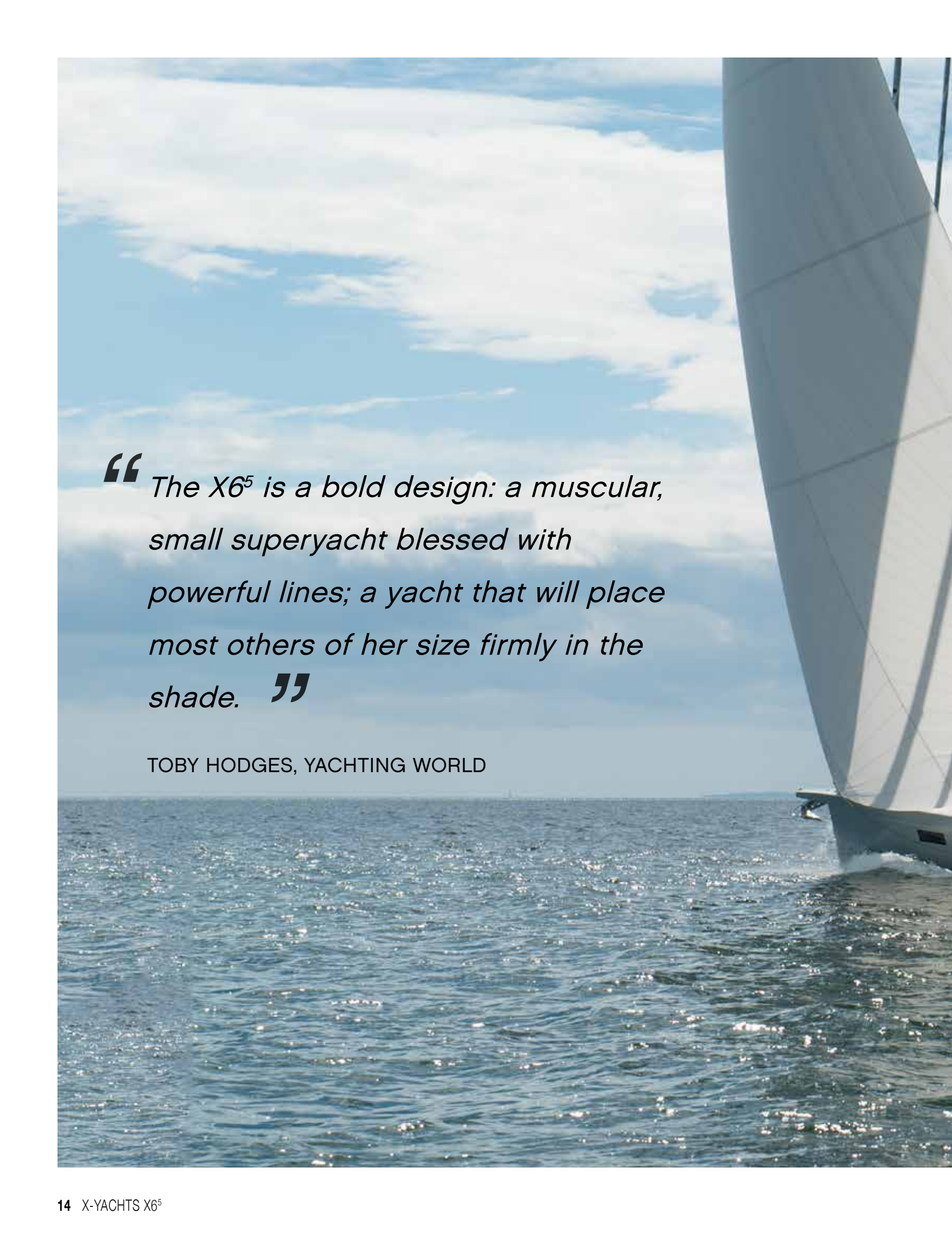
When not in use the rollers fold neatly away to create a spacious bathing platform with easy access from the water or tender



INSTRUMENTS AND NAVIGATION

We factory fit a range of options for navigation equipment and instruments from industry leading suppliers.

We can include chart plotters and autopilots all controlled from the steering pedestals as well as wind instruments at the mast to be easily visible while sailing.



“ The X6⁵ is a bold design: a muscular, small superyacht blessed with powerful lines; a yacht that will place most others of her size firmly in the shade. ”

TOBY HODGES, YACHTING WORLD





OUTDOOR LIVING

The cockpit area can be customised to your needs, offering a table with adjustable legs, which can be lowered to either coffee table height or to support a large sun bathing area as standard.

Optional cockpit cushions are held in place with fitted aluminium sections holding each cushions boltrope. Optional cockpit fridge is located in the aft part of the port side cockpit U-sofa arrangement.



The cockpit table can be a coffee table or unfolded to provide a large dining table



The cockpit area can be transformed into a large sunbathing platform by lowering the cockpit table

TAILOR MADE

The X6⁵ has been designed to ensure optimal pleasure. The coachroof is raised to allow for a panoramic view and increased natural light when below deck whilst two deck showers are fitted - one in the cockpit and one in the stern garage.

Short handed sailing is easily controlled by four electrical self-tailing winches for sheets, halyards and reef lines, all positioned within easy reach of the helmsman. The optional halyard winches can either be mounted on the deck by the mast or on the mast itself and the 106% furling genoa can be easily controlled with an electrical Reckmann headstay furler that comes as standard.

White painted aluminium mast and boom comes standard.









“ I have never walked into a boat before and fallen straight in love with it like this ”

RICHARD LANGDON, YACHTING WORLD (PHOTOGRAPHER)



SUMPTUOUS LIVING



Danish design and architecture is famous for its clean, timeless style. It showcases luxury whilst also being functionally designed to work either out on the open seas or moored up in harbour.

Superior quality, detailed interior carpentry and materials used sets it apart from mass produced boats, producing an exquisite, natural interior. The panoramic deck saloon windows and hull

portlights allow for ample light to flood in, gifting the interior with a bright and airy ambiance.

Plentiful storage space throughout allows for an uncluttered, 'live on board' lifestyle, giving you a place one can retreat to when the weather outside is less forgiving.

INTERIOR OPTIONS

The interior on the X6⁵ can be customised to suite your sailing and accommodation needs.

All options come with 'L' sofa and forward facing Nav station to starboard and a 'U' sofa with extending dining table to port.

A Interior options for the forward section

- A1 Owner's double berth on centre line, en-suite head/shower to port, full length sail cabin
- A2 Owner's double berth to port, en-suite head/shower forward, full length sail cabin
- A3 Owner's double berth on centre, 2 single berths on freeboard to port, shared head/shower to starboard

B Interior options for the middle section

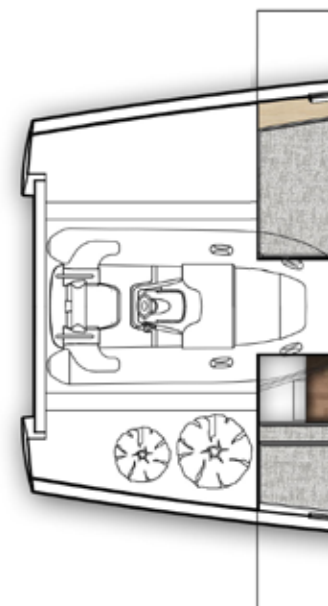
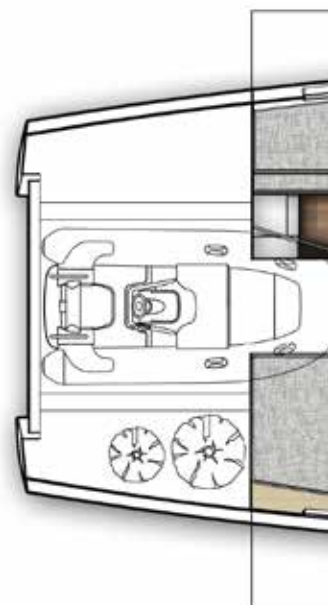
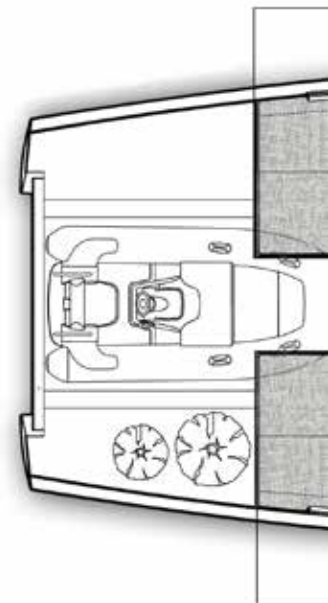
- B1 Extended galley
- B2 Work shop to port
- B3 Aft cabins' head to port

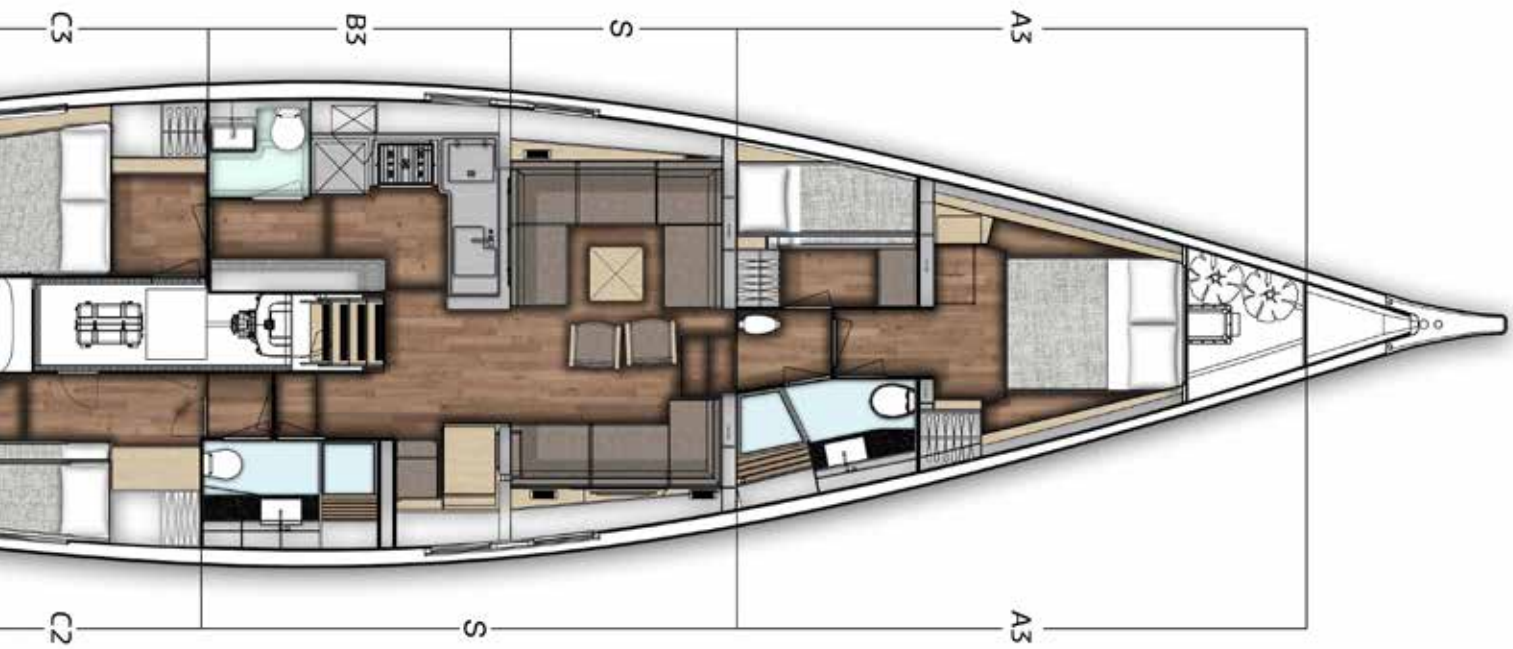
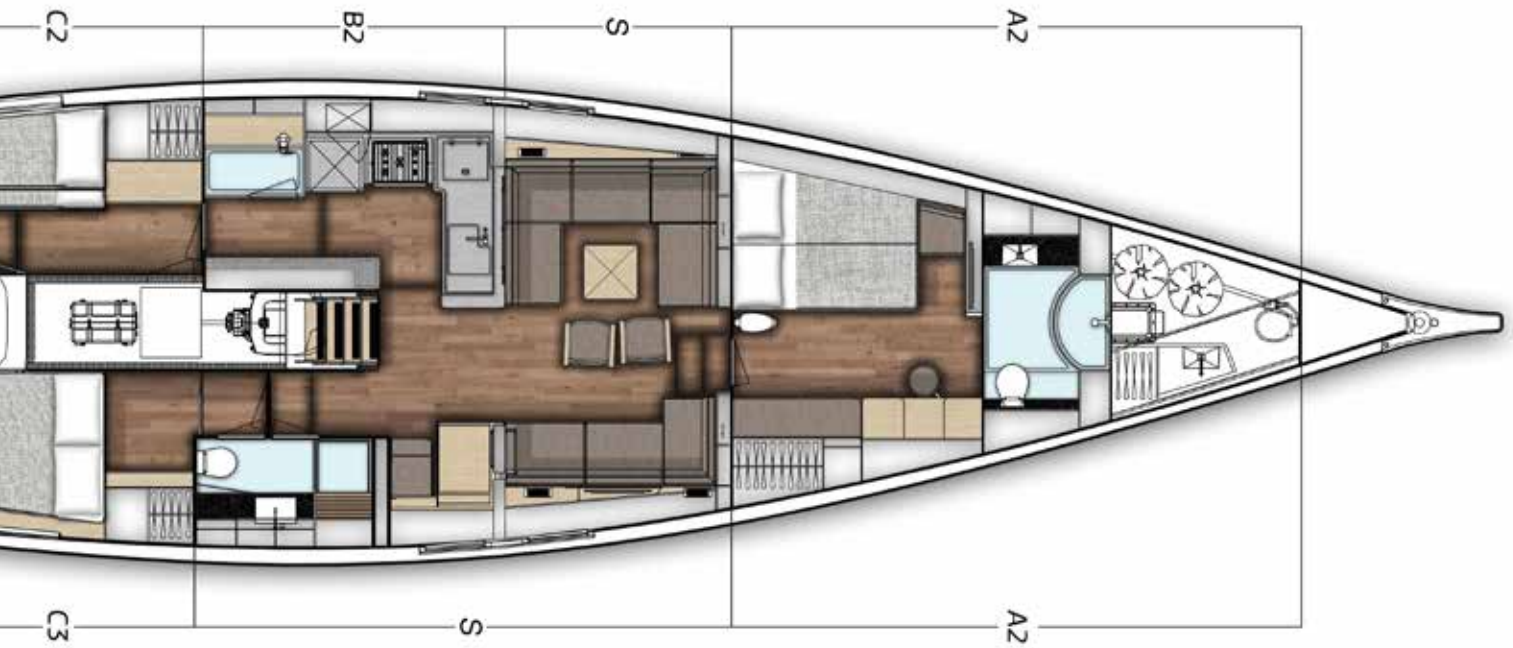
C Interior options for the aft section

- C1 V Berth with in-fill
- C2 Bunk beds (2 berths) on freeboard
- C3 Double berth

Notes

- A3 Reduced sail cabin length







SALOON

Above: Standard surface 'Steady Oak' veneers which is brushed and lightly varnished, giving a rustic ambience.



The bulkhead-recessed shelves can accommodate books and decorative items along with integrated, ambient LED lighting.

The large U-sofa seats eight guests around the table which can be lowered to become a smaller coffee table whilst the chairs on the aisle can be fixed to the floorboards.

The 28mm foam cored, sandwich floor boards come with a varnished, walnut top surface.



GALLEY

Above: Optional matte-surfaced 6mm solid stainless steel worktop with a seamless integrated Gastronorm double sink complete with beech wood cutting board



The galley comes in two versions, the standard being an extended and incredibly spacious area with white painted and hand polished satin finish and worktops in black Corian (other options available).

The space is designed around the 'Gastronorm Catering System' which transforms the space into a more functional and significantly safer place to

prepare and cook food whilst at sea.

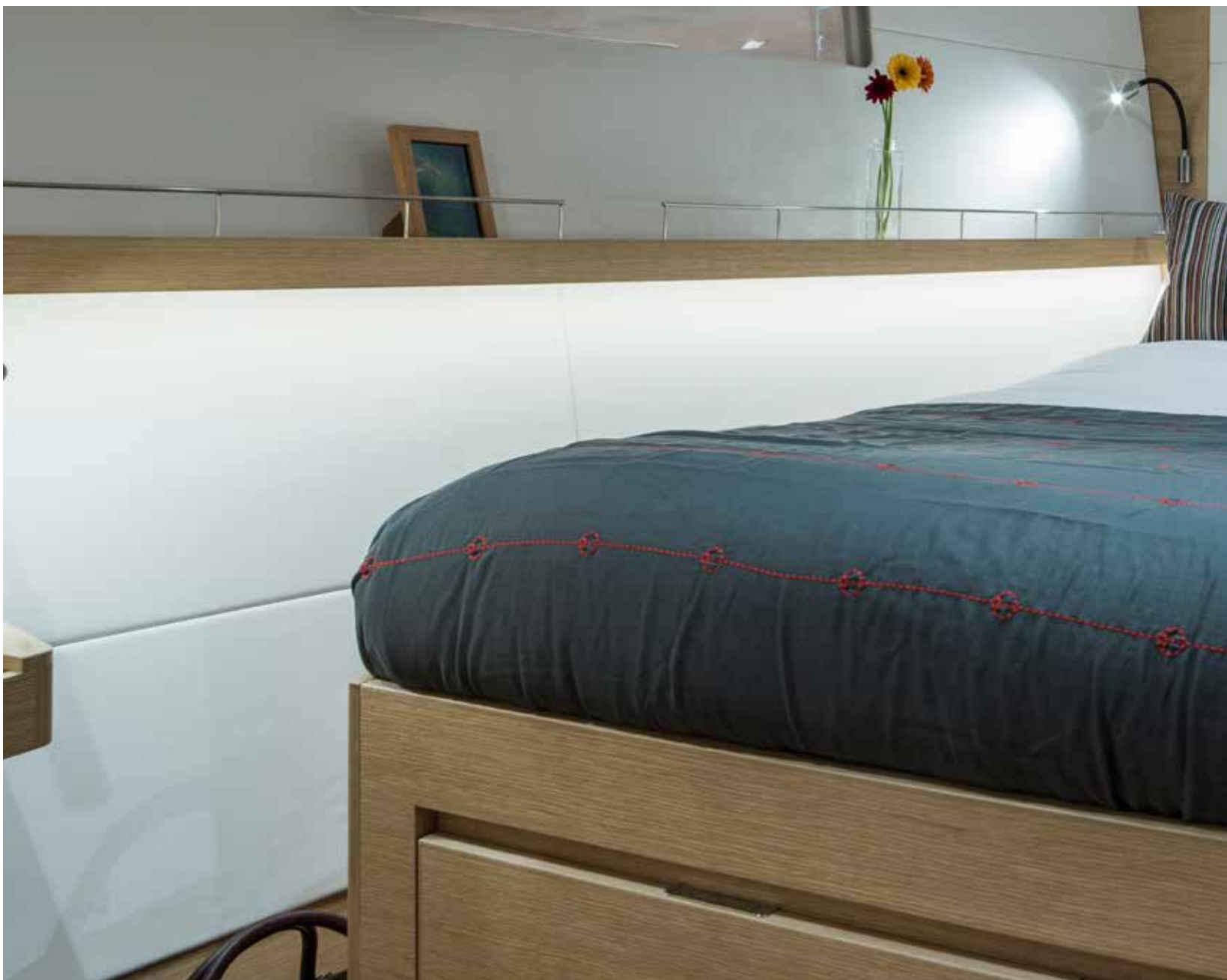
Option to add an additional front opening fridge on top of the standard 135-litre fridge and 175-litre top opening freezer as well as an additional dishwasher and coffee maker.



NAV STATION



The forward facing nav station provides easy access to the yacht's customised switch panel and control centre. There is ample space for charts and navigational literature as well as for the yacht's communication systems.



Right: Dressing table on port side with integrated seat, vanity mirror and storage compartment. Bulkhead recessed bookshelves come with room for optional flatscreen television.

OWNER'S CABIN

Owner's cabin located in front of the mast, with easy to reach storage space under the large double berth and large double wardrobe on starboard side with hangers and shelves. There is a sofa directly in front of the wardrobe with additional drawers below.

All berths have comfortable, double density foam mattresses which rest on laminated curved battens, providing ultimate ventilation and well-being.





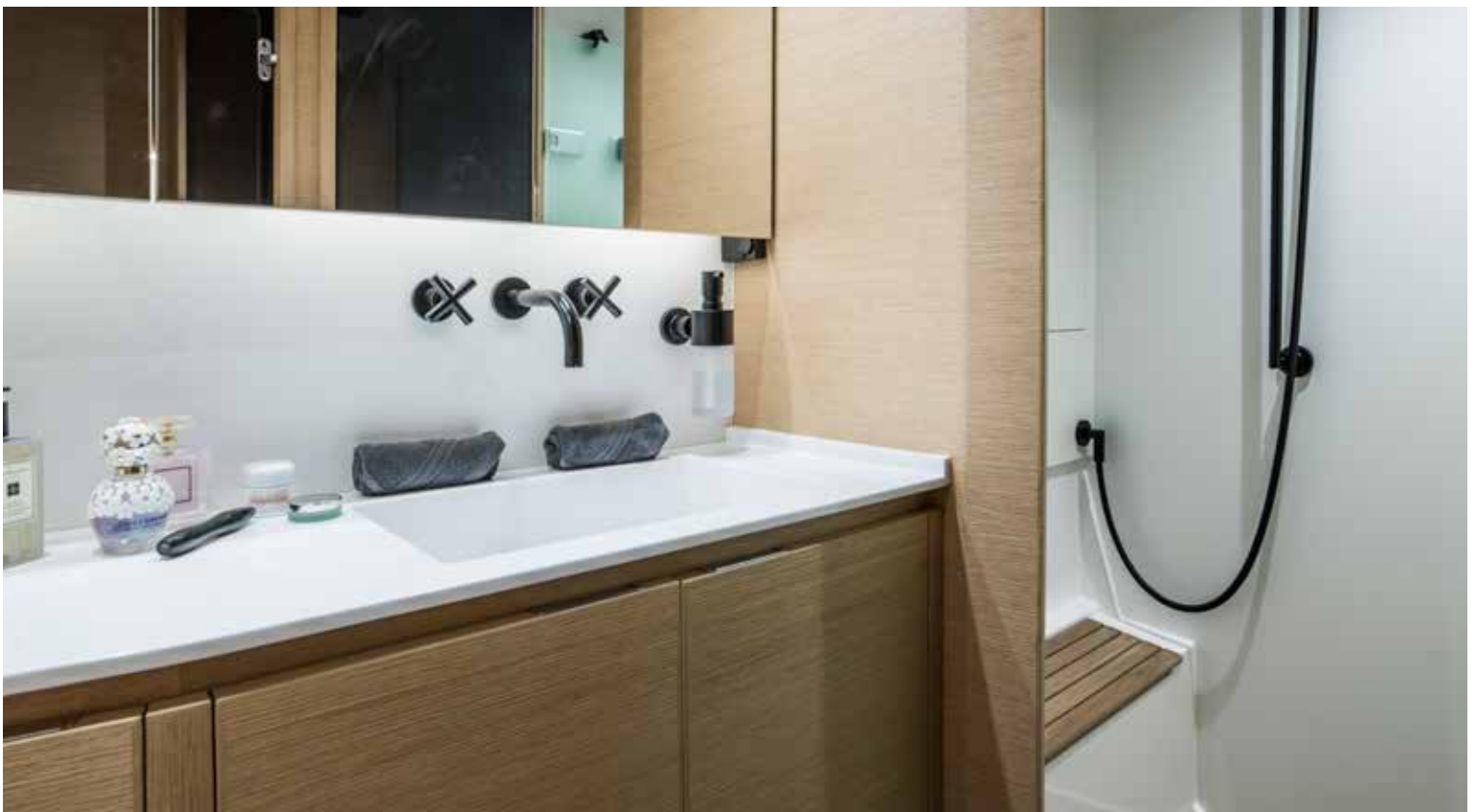
LIVING QUARTERS

Number of cabins can vary on choice of layout. The image above displays the port aft cabin which can either be twin or single berths on freeboard with ample storage both under the berth and in a large wardrobe with hangers, shelves and drawers.

All heads come with Tecma electric toilets, white Corian table and integrated sink, high quality mixer faucets and built-in ambient lighting, cupboards and a mirror.

Inside the luxurious owner's heads, there is a dedicated shower room in all layout options.

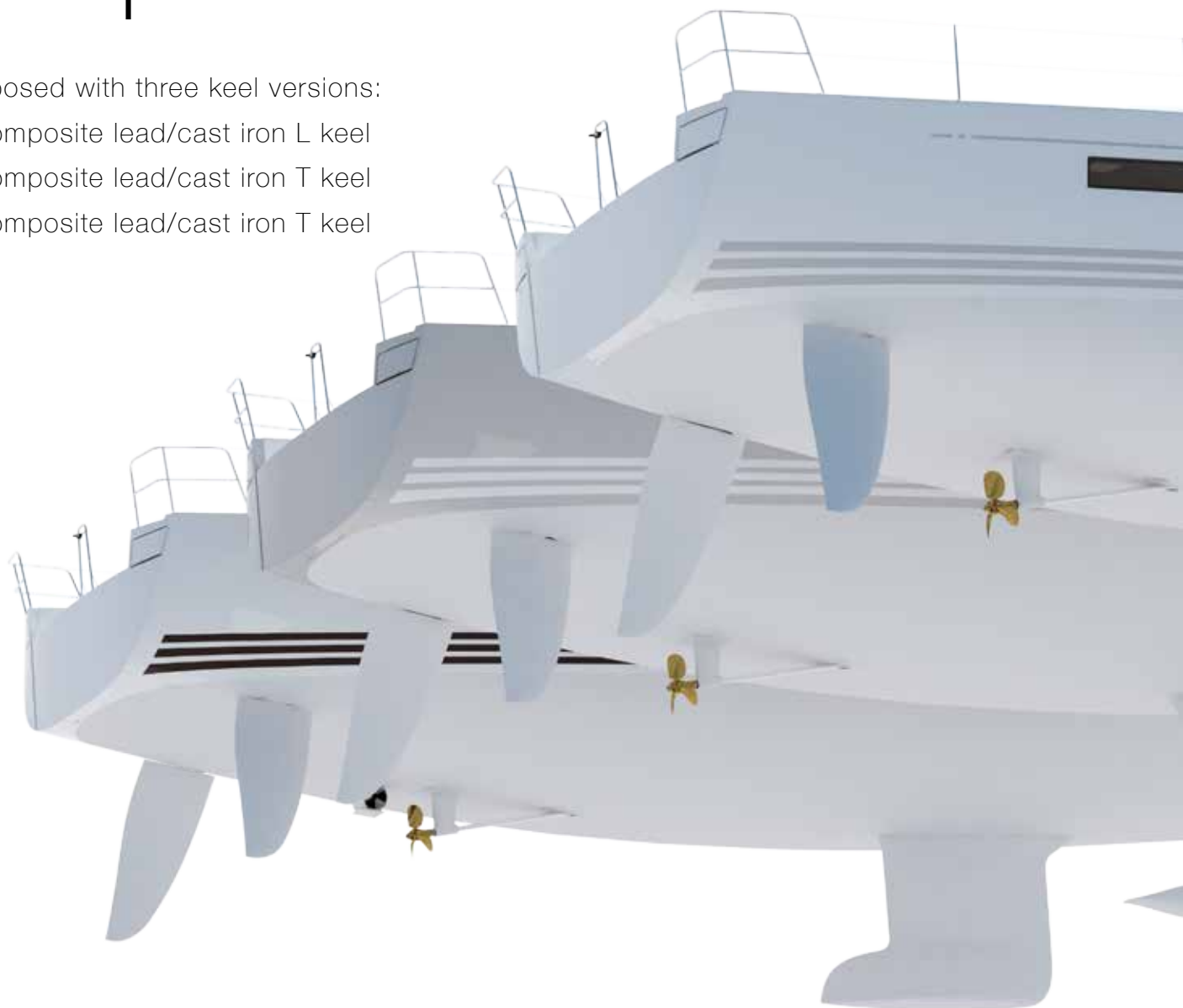
Right: Four cabin version's head and shower compartment & Optional black taps.



Foil options

The X6⁵ is proposed with three keel versions:

- 2.6m draft composite lead/cast iron L keel
- 3.0m draft composite lead/cast iron T keel
- 3.4m draft composite lead/cast iron T keel

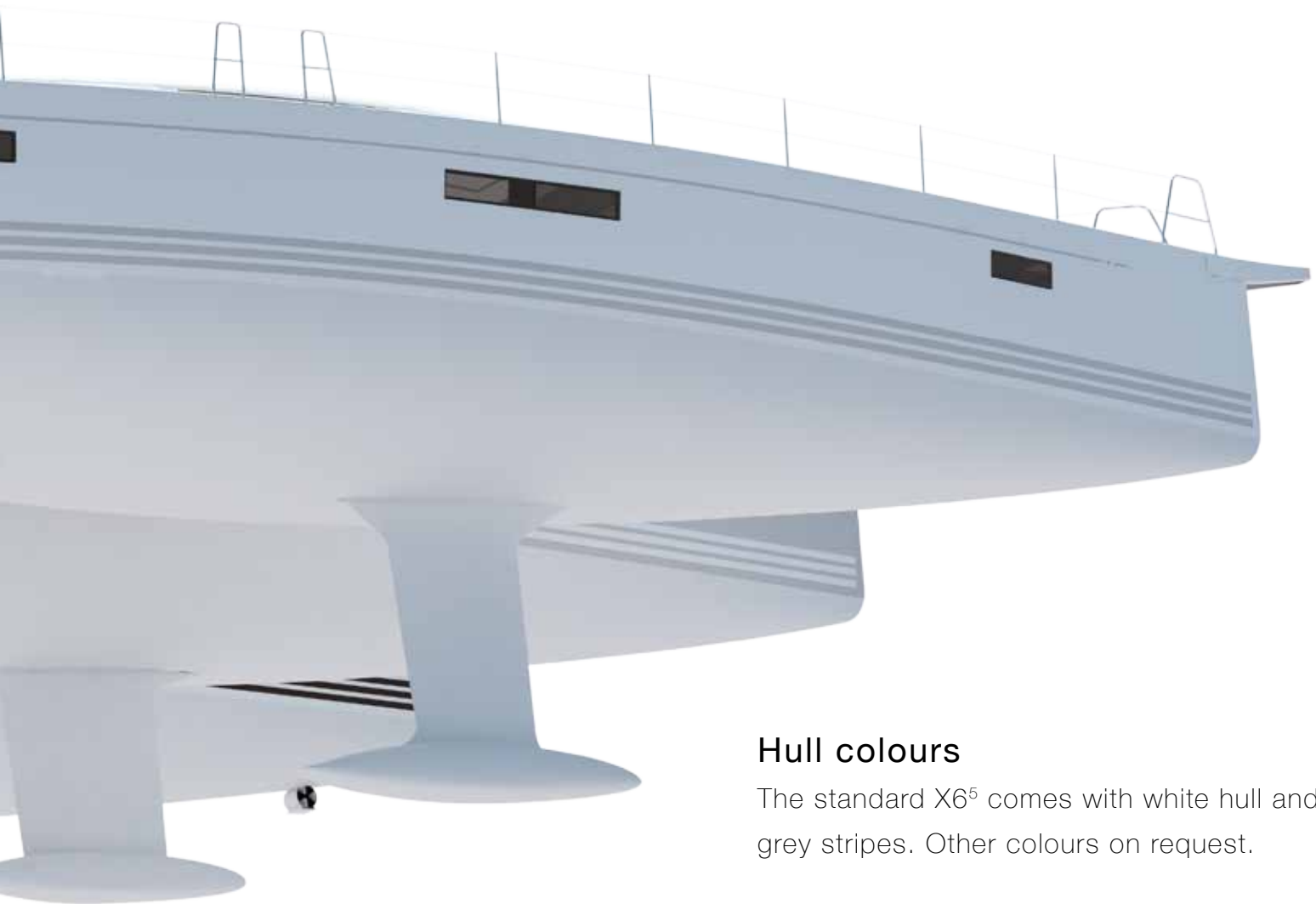


All X-Yachts keels are encapsulated in GRP and faired to get the exact NACA profile necessary for efficient hydrodynamics

Twin rudder blades allow for maximum control whilst heeled and give space for the stern garage.

The X6⁵ comes with a retractable bow thruster and is offered with a retractable stern thruster.

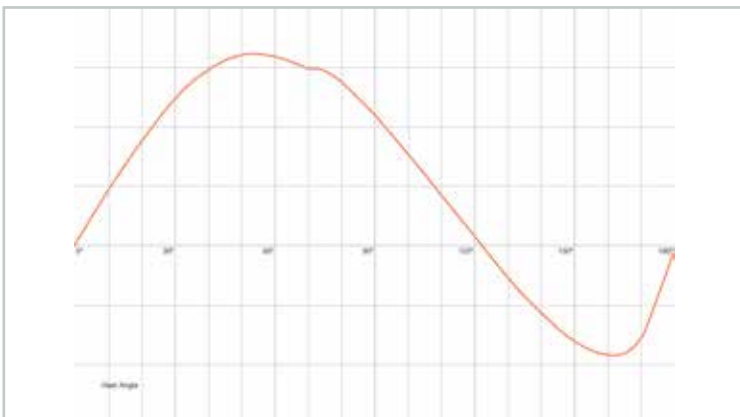
3-blade 24" folding propeller driven by 160HP gives the X6⁵ a comfortable motoring speed in excess of 9 knots.



Hull colours

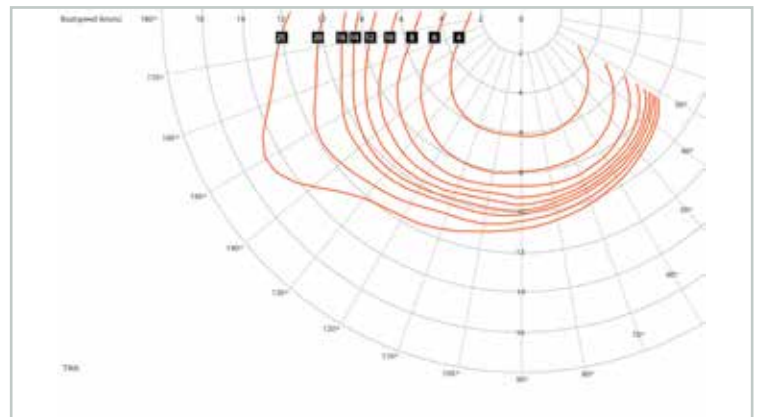
The standard X6⁵ comes with white hull and light grey stripes. Other colours on request.

X6⁵ stability curve



The X6 stability surpasses the ISO minimum requirement by a large margin

X6⁵ speed prediction



This polar plot demonstrates very promising all round performances



X6⁵ Dimensions

| | | |
|---------------------------------|-----------|------------|
| Overall length (inc. bowroller) | 20.10 m | 66 ft |
| Hull length | 19.19 m | 63.1 ft |
| Waterline length | 17.85 m | 58.6 ft |
| Beam | 5.40 m | 17.8 ft |
| Draft (option A: L-keel) | 2.6 m | 8.5 ft |
| Draft (option B: T-keel) | 3.0 m | 9.8 ft |
| Draft (option C: T-keel) | 3.4 m | 11.2 ft |
| Displacement (option B) | 29,500 kg | 65,030 lbs |

ENGINE/TANKS

| | | |
|-------------------|-----------|--------------|
| Engine (standard) | 119 kW | 160 HP |
| Fuel capacity | 1,200 Ltr | 317 (US) gal |
| Water capacity | 1,000 Ltr | 264 (US) gal |

SAIL AREAS

| | | |
|----------------------|--------------------|-----------------------|
| Mainsail | 130 m ² | 1,399 ft ² |
| Genoa (106%) | 90 m ² | 969 ft ² |
| Asymmetric spinnaker | 280 m ² | 3,014 ft ² |

Sail areas are based on standard mast. Standard mast is a keel stepped, tapered, 3-spreader aluminium mast. Optional carbon mast/boom on request.



X-Yachts[®]
WORLD CLASS SINCE 1979